

ENPLANED/DEPLANED PASSENGERS  
MONTH OF APRIL 2014

**VALLEY INTERNATIONAL AIRPORT (HRL)**

**CALENDAR YEAR**

	APRIL 2014					INC/DEC %	2014 YEAR-TO-DATE					YEAR-TO-DATE ENPLANED - DEPLANED INC/DEC %
	ENPLANED	INC/DEC %	DEPLANED	INC/DEC %	TOTAL		ENPLANED	INC/DEC %	DEPLANED	INC/DEC %	TOTAL	
SOUTHWEST	19,461	0.70%	18,784	0.29%	38,245	0.50%	73,887	1.00%	71,566	-1.68%	145,453	-0.34%
CONTINENTAL	4,021	-7.99%	4,021	-3.16%	8,042	-5.63%	16,837	-6.40%	15,405	-10.50%	32,242	-8.40%
SUNCOUNTRY	2,073	-16.21%	1,049	-34.19%	3,122	-23.25%	9,520	-19.33%	8,916	-22.58%	18,436	-20.93%
DELTA	2,836	n/a	1,164	n/a	4,000	n/a	12,052	n/a	10,116	n/a	22,168	n/a
CHARTERS	289	0.70%	0	n/a	289	-90.62%	919	-5.74%	464	-92.20%	1,383	-80.03%
<b>TOTAL</b>	<b>28,680</b>	<b>8.41%</b>	<b>25,018</b>	<b>-8.26%</b>	<b>53,698</b>	<b>-0.05%</b>	<b>113,215</b>	<b>8.94%</b>	<b>106,467</b>	<b>-0.93%</b>	<b>219,682</b>	<b>3.92%</b>

	APRIL 2013			2013 YEAR-TO-DATE		
	ENPLANED	DEPLANED	TOTAL	ENPLANED	DEPLANED	TOTAL
SOUTHWEST	19,325	18,729	38,054	73,158	72,786	145,944
UNITED	4,370	4,152	8,522	17,988	17,212	35,200
SUNCOUNTRY	2,474	1,594	4,068	11,801	11,516	23,317
CHARTERS	287	2,795	3,082	975	5,952	6,927
<b>TOTAL</b>	<b>26,456</b>	<b>27,270</b>	<b>53,726</b>	<b>103,922</b>	<b>107,466</b>	<b>211,388</b>

**BROWNSVILLE/SOUTH PADRE ISLAND INTERNATIONAL AIRPORT (BRO)**

**CALENDAR YEAR**

	APRIL 2014					INC/DEC %	2014 YEAR-TO-DATE					YEAR-TO-DATE ENPLANED - DEPLANED INC/DEC %
	ENPLANED	INC/DEC %	DEPLANED	INC/DEC %	TOTAL		ENPLANED	INC/DEC %	DEPLANED	INC/DEC %	TOTAL	
CONTINENTAL	4,236	-23.32%	3,625	-21.16%	7,861	-22.34%	17,514	-14.19%	15,481	-16.87%	32,995	-15.47%
AMERICAN	3,991	32.86%	3,679	41.07%	7,670	36.67%	14,826	36.94%	13,887	43.71%	28,713	40.13%
AEROMEXICO	n/a	n/a	n/a	n/a	n/a	n/a	n/a	n/a	n/a	n/a	n/a	n/a
<b>TOTAL</b>	<b>8,227</b>	<b>-5.68%</b>	<b>7,304</b>	<b>-0.46%</b>	<b>15,531</b>	<b>-1.29%</b>	<b>32,340</b>	<b>0.98%</b>	<b>29,368</b>	<b>0.99%</b>	<b>61,708</b>	<b>3.67%</b>

	APRIL 2013			2013 YEAR-TO-DATE		
	ENPLANED	DEPLANED	TOTAL	ENPLANED	DEPLANED	TOTAL
UNITED	5,524	4,598	10,122	20,410	18,623	39,033
AMERICAN	3,004	2,608	5,612	10,827	9,663	20,490
AEROMEXICO	194	132	326	788	793	1,581
<b>TOTAL</b>	<b>8,722</b>	<b>7,338</b>	<b>15,734</b>	<b>32,025</b>	<b>29,079</b>	<b>59,523</b>

**MCALLEN INTERNATIONAL AIRPORT (MFE)**

**CALENDAR YEAR**

	<u>APRIL 2014</u>					<u>INC/DEC %</u>	<u>2014 YEAR-TO-DATE</u>					<u>YEAR-TO-DATE ENPLANED - DEPLANED INC/DEC %</u>
	<u>ENPLANED</u>	<u>INC/DEC %</u>	<u>DEPLANED</u>	<u>INC/DEC %</u>	<u>TOTAL</u>		<u>ENPLANED</u>	<u>INC/DEC %</u>	<u>DEPLANED</u>	<u>INC/DEC %</u>	<u>TOTAL</u>	
AMERICAN	18,208	46.58%	17,158	46.89%	35,366	46.73%	61,216	28.18%	59,782	27.09%	120,998	27.64%
CONTINENTAL	9,455	-12.53%	8,971	-10.27%	18,426	-11.45%	38,599	-10.04%	37,257	-8.17%	75,856	-9.13%
ALLEGiant	4,694	12.92%	4,603	4.83%	9,297	8.76%	16,130	-2.08%	16,156	-3.45%	32,286	-2.77%
DELTA	0	n/a	0	n/a	0	n/a	0	n/a	0	n/a	0	n/a
AEROMAR	638	852.24%	689	928.36%	1,327	890.30%	2,061	824.22%	1,994	794.17%	4,055	809.19%
CHARTERS	0	n/a	0	n/a	0	n/a	120	-85.87%	0	n/a	120	-93.26%
<b>TOTAL</b>	<b>32,995</b>	<b>18.10%</b>	<b>31,421</b>	<b>18.27%</b>	<b>64,416</b>	<b>18.18%</b>	<b>118,126</b>		<b>115,189</b>		<b>233,315</b>	<b>9.18%</b>

	<u>APRIL 2013</u>			<u>2013 YEAR-TO-DATE</u>		
	<u>ENPLANED</u>	<u>DEPLANED</u>	<u>TOTAL</u>	<u>ENPLANED</u>	<u>DEPLANED</u>	<u>TOTAL</u>
AMERICAN	12,422	11,681	24,103	47,759	47,038	94,797
UNITED	10,810	9,998	20,808	42,907	40,571	83,478
ALLEGiant	4,157	4,391	8,548	16,473	16,733	33,206
DELTA	0	0	0	0	0	0
CHARTERS	67	67	134	223	223	446
AEROMAR	482	431	913	849	931	1,780
<b>TOTAL</b>	<b>27,938</b>	<b>26,568</b>	<b>54,506</b>	<b>108,211</b>	<b>105,496</b>	<b>213,707</b>

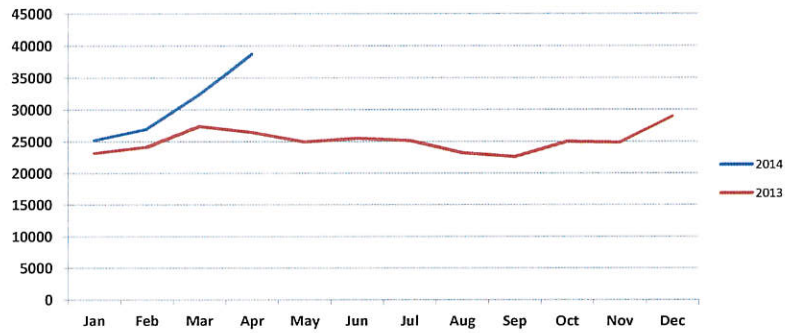
**RGV AIRPORT MARKET SHARE**

	<u>HRL</u>	<u>BRO</u>	<u>MFE</u>	<u>TOTAL</u>	<u>% HRL</u>	<u>% BRO</u>	<u>% MFE</u>
APRIL 2013	26,456	8,722	27,938	63,116	41.9%	13.8%	44.3%
APRIL 2014	28,680	8,227	32,995	69,902	41.0%	11.8%	47.2%
% Change	8.4%	-5.7%	18.1%	10.8%			
YTD 2013	103,922	32,025	108,211	244,158	42.6%	13.1%	44.3%
YTD 2014	113,215	32,340	118,126	263,681	42.9%	12.3%	44.8%
% Change	8.9%	1.0%	9.2%	8.0%			

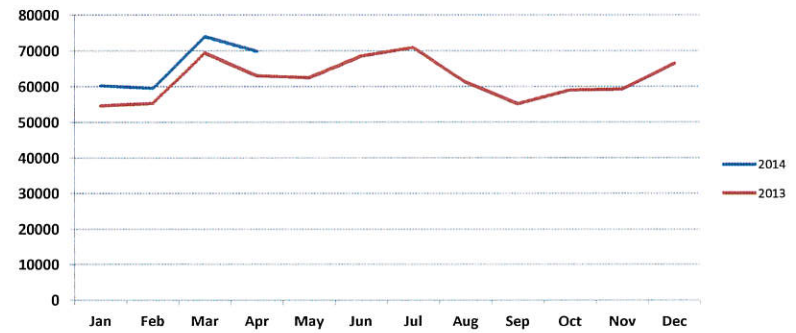
QUESTIONS OR COMMENTS? CALL:  
T. MICHAEL BROWNING, A.A.E., DIRECTOR OF AVIATION  
HARLINGEN'S VALLEY INTERNATIONAL AIRPORT  
956/430-8605 www.flythevalley.com

Source: BRO, HRL and MFE Airport Management  
Assembled and Distributed by HRL Management

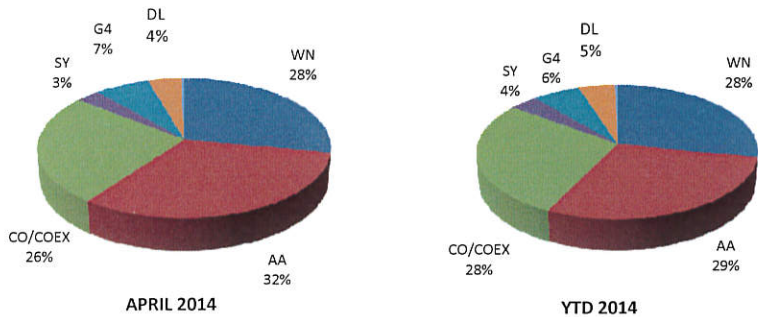
### VIA Monthly 2014 vs. 2013



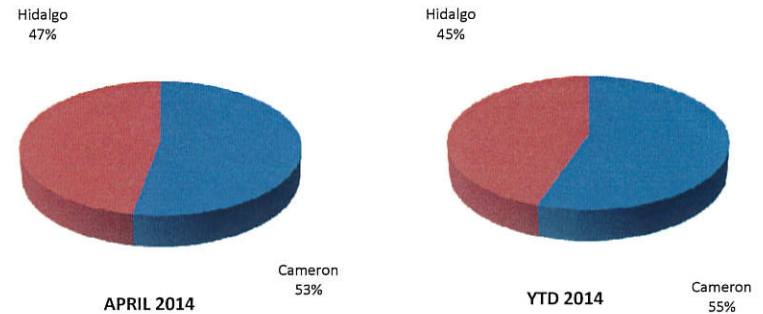
### RGV Monthly 2014 vs. 2013



### RGV Airline Market Share



### Cameron County vs. Hidalgo County



QUESTIONS OR COMMENTS? CALL:  
T. MICHAEL BROWNING, A.A.E., DIRECTOR OF AVIATION  
HARLINGEN'S VALLEY INTERNATIONAL AIRPORT  
956/430-8605 www.flythevalley.com

Source: BRO, HRL and MFE Airport Management  
Assembled and Distributed by HRL Management