

ENPLANED/DEPLANED PASSENGERS
MONTH OF DECEMBER 2011

VALLEY INTERNATIONAL AIRPORT (HRL)

CALENDAR YEAR

	DECEMBER 2011					INC/DEC %	2011 YEAR-TO-DATE					YEAR-TO-DATE ENPLANED - DEPLANED INC/DEC %
	ENPLANED	INC/DEC %	DEPLANED	INC/DEC %	TOTAL		ENPLANED	INC/DEC %	DEPLANED	INC/DEC %	TOTAL	
	SOUTHWEST	22,461	-4.68%	22,874	-3.23%		45,335	-3.95%	265,634	-6.89%	264,733	
CONTINENTAL	5,615	-1.04%	5,397	1.05%	11,012	-0.03%	64,578	-5.11%	62,448	-2.94%	127,026	-4.06%
SUNCOUNTRY	1,810	-22.52%	1,744	-25.94%	3,554	-24.24%	13,867	-9.47%	13,581	-7.89%	27,448	-8.69%
CHARTERS	326	1.24%	325	0.93%	651	1.09%	2,348	-19.03%	2,203	-29.82%	4,551	-24.64%
TOTAL	30,212	-5.28%	30,340	-4.15%	60,552	-4.72%	346,427	-6.76%	342,965	-5.86%	689,392	-6.31%

	DECEMBER 2010			2010 YEAR-TO-DATE		
	ENPLANED	DEPLANED	TOTAL	ENPLANED	DEPLANED	TOTAL
SOUTHWEST	23,563	23,637	47,200	285,287	282,078	567,365
CONTINENTAL	5,674	5,341	11,015	68,055	64,341	132,396
SUNCOUNTRY	2,336	2,355	4,691	15,317	14,744	30,061
CHARTERS	322	322	644	2,900	3,139	6,039
TOTAL	31,895	31,655	63,550	371,559	364,302	735,861

BROWNSVILLE/SOUTH PADRE ISLAND INTERNATIONAL AIRPORT (BRO)

CALENDAR YEAR

	DECEMBER 2011					INC/DEC %	2011 YEAR-TO-DATE					YEAR-TO-DATE ENPLANED - DEPLANED INC/DEC %
	ENPLANED	INC/DEC %	DEPLANED	INC/DEC %	TOTAL		ENPLANED	INC/DEC %	DEPLANED	INC/DEC %	TOTAL	
	CONTINENTAL	5,413	0.11%	5,227	-1.69%		10,640	-0.78%	65,177	-1.58%	62,661	
AMERICAN EAGLE	1,624	-8.35%	1,675	2.38%	3,299	-3.20%	21,469	-0.07%	19,226	-2.61%	40,695	-1.28%
AEROMEXICO	519	N/A	510	N/A	1,029	N/A	2,354	N/A	2,391	N/A	4,745	N/A
TOTAL	7,556	5.25%	7,412	6.60%	13,939	-1.37%	89,000	1.48%	84,278	2.57%	168,533	-0.79%

	DECEMBER 2010			2010 YEAR-TO-DATE		
	ENPLANED	DEPLANED	TOTAL	ENPLANED	DEPLANED	TOTAL
CONTINENTAL	5,407	5,317	10,724	66,222	62,424	128,646
AMERICAN AIRLINES	1,772	1,636	3,408	21,483	19,741	41,224
TOTAL	7,179	6,953	14,132	87,705	82,165	169,870

MCALLEN INTERNATIONAL AIRPORT (MFE)

CALENDAR YEAR

	<u>DECEMBER 2011</u>					<u>INC/DEC %</u>	<u>2011 YEAR-TO-DATE</u>					<u>YEAR-TO-DATE ENPLANED - DEPLANED INC/DEC %</u>
	<u>ENPLANED</u>	<u>INC/DEC %</u>	<u>DEPLANED</u>	<u>INC/DEC %</u>	<u>TOTAL</u>		<u>ENPLANED</u>	<u>INC/DEC %</u>	<u>DEPLANED</u>	<u>INC/DEC %</u>	<u>TOTAL</u>	
AMERICAN	8,686	-20.30%	7,691	-27.19%	16,377	-23.69%	104,721	-9.61%	102,950	-9.59%	207,671	-9.60%
CONTINENTAL	13,374	-4.09%	13,101	-1.24%	26,475	-2.70%	156,988	-3.07%	153,257	-2.05%	310,245	-2.57%
ALLEGIANT	5,676	14.00%	5,460	16.57%	11,136	15.24%	51,729	8.80%	52,796	12.32%	104,525	10.55%
DELTA	2,155	-37.21%	2,121	-34.38%	4,276	-35.83%	28,714	-6.39%	28,731	-6.80%	57,445	-6.60%
CHARTERS	0	N/A	0	N/A	0	N/A	278	-47.74%	278	-47.74%	556	-47.74%
TOTAL	29,891	-10.11%	28,373	-10.62%	58,264	-10.36%	342,430	-3.97%	338,012	-3.07%	680,442	-3.52%

	<u>DECEMBER 2010</u>			<u>2010 YEAR-TO-DATE</u>		
	<u>ENPLANED</u>	<u>DEPLANED</u>	<u>TOTAL</u>	<u>ENPLANED</u>	<u>DEPLANED</u>	<u>TOTAL</u>
AMERICAN	10,898	10,563	21,461	115,859	113,872	229,731
CONTINENTAL	13,945	13,265	27,210	161,958	156,471	318,429
ALLEGIANT	4,979	4,684	9,663	47,546	47,004	94,550
DELTA	3,432	3,232	6,664	30,675	30,826	61,501
CHARTERS	0	0	0	532	532	1,064
TOTAL	33,254	31,744	64,998	356,570	348,705	705,275

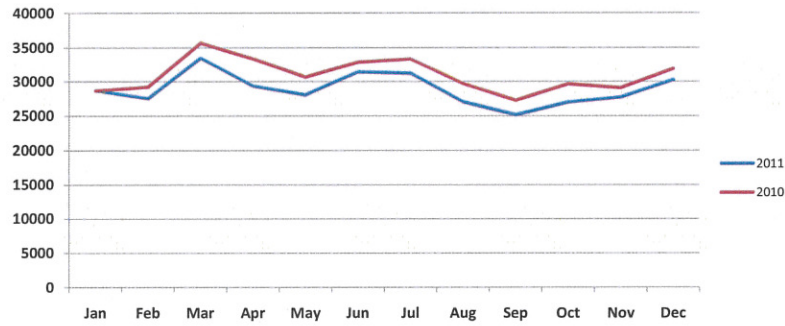
RGV AIRPORT MARKET SHARE

	<u>HRL</u>	<u>BRO</u>	<u>MFE</u>	<u>TOTAL</u>	<u>% HRL</u>	<u>% BRO</u>	<u>% MFE</u>
DECEMBER 2010	31,895	7,179	33,254	72,328	44.0%	9.9%	46.0%
DECEMBER 2011	30,212	7,556	29,891	67,659	44.7%	11.2%	44.2%
% Change	-5.3%	5.3%	-10.1%	-6.5%			
YTD 2010	371,559	87,705	356,570	815,834	45.5%	10.8%	43.7%
YTD 2011	346,427	89,000	342,430	777,857	44.5%	11.4%	44.0%
% Change	-6.8%	1.5%	-4.0%	-4.7%			

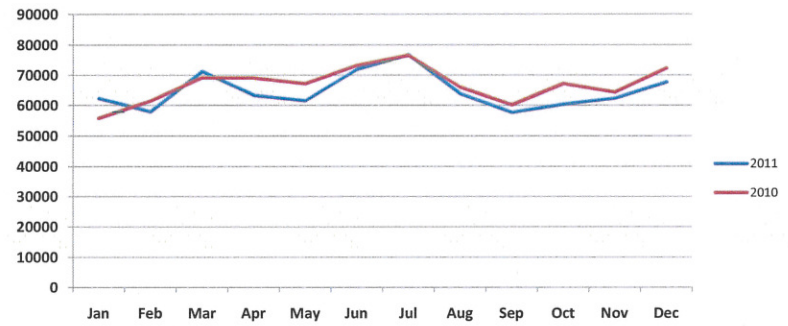
QUESTIONS OR COMMENTS? CALL:
T. MICHAEL BROWNING, A.A.E., DIRECTOR OF AVIATION
HARLINGEN'S VALLEY INTERNATIONAL AIRPORT
956/430-8605 www.flythevalley.com

Source: BRO, HRL and MFE Airport Management
Assembled and Distributed by HRL Management

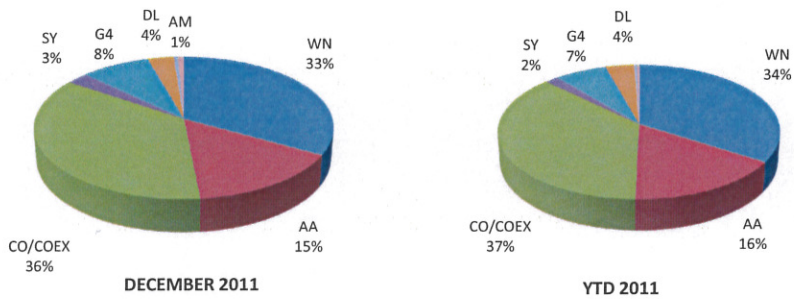
VIA Monthly 2011 vs. 2010



RGV Monthly 2011 vs. 2010



RGV Airline Market Share



Cameron County vs. Hidalgo County

