

ENPLANED/DEPLANED PASSENGERS
MONTH OF APRIL 2011

VALLEY INTERNATIONAL AIRPORT (HRL)

CALENDAR YEAR

	APRIL 2011					INC/DEC %	2011 YEAR-TO-DATE					YEAR-TO-DATE ENPLANED - DEPLANED INC/DEC %
	ENPLANED	INC/DEC %	DEPLANED	INC/DEC %	TOTAL		ENPLANED	INC/DEC %	DEPLANED	INC/DEC %	TOTAL	
SOUTHWEST	21,451	-13.77%	20,802	-12.21%	42,253	-13.01%	85,889	-6.66%	84,813	-5.68%	170,702	-6.18%
CONTINENTAL	5,262	-9.46%	4,814	-8.01%	10,076	-8.77%	21,240	-7.66%	20,169	-8.30%	41,409	-7.97%
SUNCOUNTRY	2,491	6.64%	1,594	16.78%	4,085	10.38%	10,920	-1.36%	10,423	1.39%	21,343	-0.04%
CHARTERS	105	-71.70%	108	-68.79%	213	-70.29%	866	-8.17%	727	-20.81%	1,593	-14.40%
TOTAL	29,309	-12.24%	27,318	-10.84%	56,627	-11.57%	118,915	-6.39%	116,132	-5.67%	235,047	-6.04%

	APRIL 2010			2010 YEAR-TO-DATE		
	ENPLANED	DEPLANED	TOTAL	ENPLANED	DEPLANED	TOTAL
SOUTHWEST	24,877	23,694	48,571	92,022	89,925	181,947
CONTINENTAL	5,812	5,233	11,045	23,003	21,994	44,997
SUNCOUNTRY	2,336	1,365	3,701	11,071	10,280	21,351
CHARTERS	371	346	717	943	918	1,861
TOTAL	33,396	30,638	64,034	127,039	123,117	250,156

BROWNSVILLE/SOUTH PADRE ISLAND INTERNATIONAL AIRPORT (BRO)

CALENDAR YEAR

	APRIL 2011					INC/DEC %	2011 YEAR-TO-DATE					YEAR-TO-DATE ENPLANED - DEPLANED INC/DEC %
	ENPLANED	INC/DEC %	DEPLANED	INC/DEC %	TOTAL		ENPLANED	INC/DEC %	DEPLANED	INC/DEC %	TOTAL	
CONTINENTAL	5,523	-7.98%	5,058	-5.56%	10,581	-6.84%	21,652	-2.04%	20,755	0.95%	42,407	-0.60%
AMERICAN EAGLE	1,841	4.54%	1,594	6.55%	3,435	5.47%	7,303	-6.46%	6,293	-9.87%	13,596	-8.07%
TOTAL	7,364	-5.14%	6,652	-2.92%	14,016	-4.10%	28,955	-3.20%	27,048	-1.79%	56,003	-2.52%

	APRIL 2010			2010 YEAR-TO-DATE		
	ENPLANED	DEPLANED	TOTAL	ENPLANED	DEPLANED	TOTAL
CONTINENTAL	6,002	5,356	11,358	22,104	20,560	42,664
AMERICAN EAGLE	1,761	1,496	3,257	7,807	6,982	14,789
TOTAL	7,763	6,852	14,615	29,911	27,542	57,453

MCALLEN INTERNATIONAL AIRPORT (MFE)

CALENDAR YEAR

	APRIL 2011					INC/DEC %	2011 YEAR-TO-DATE					YEAR-TO-DATE ENPLANED - DEPLANED INC/DEC %
	ENPLANED	INC/DEC %	DEPLANED	INC/DEC %	TOTAL		ENPLANED	INC/DEC %	DEPLANED	INC/DEC %	TOTAL	
AMERICAN	9,303	-10.52%	8,688	-11.99%	17,991	-11.24%	35,898	-11.70%	35,418	-10.53%	71,316	-11.12%
CONTINENTAL	12,773	2.22%	11,964	-0.08%	24,737	1.10%	49,966	-1.87%	49,093	1.11%	99,059	-0.41%
ALLEGIANT	2,508	-15.70%	2,549	-14.58%	5,057	-15.14%	11,431	-3.36%	13,161	9.79%	24,592	3.26%
DELTA	2,061	-0.34%	1,726	-13.05%	3,787	-6.56%	9,336	8.41%	9,198	6.14%	18,534	7.27%
CHARTERS	0	NA	0	NA	0	NA	0	NA	0	NA	0	NA
TOTAL	26,645	-4.62%	24,927	-7.04%	51,572	-5.80%	106,631	-4.80%	106,870	-1.77%	213,501	-3.31%

	APRIL 2010			2010 YEAR-TO-DATE		
	ENPLANED	DEPLANED	TOTAL	ENPLANED	DEPLANED	TOTAL
AMERICAN	10,397	9,872	20,269	40,655	39,587	80,242
CONTINENTAL	12,495	11,973	24,468	50,916	48,554	99,470
ALLEGIANT	2,975	2,984	5,959	11,828	11,987	23,815
DELTA	2,068	1,985	4,053	8,612	8,666	17,278
CHARTERS	0	0	0	0	0	0
TOTAL	27,935	26,814	54,749	112,011	108,794	220,805

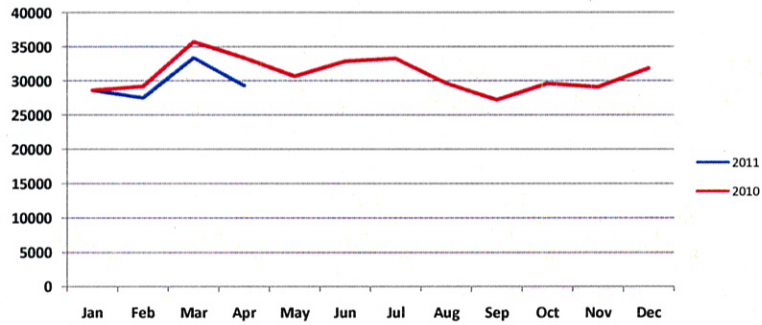
RGV AIRPORT MARKET SHARE

	HRL	BRO	MFE	TOTAL	% HRL	% BRO	% MFE
April 2010	33,396	7,763	27,935	69,094	48.3%	11.2%	40.4%
April 2011	29,309	7,364	26,645	63,318	46.3%	11.6%	42.1%
% Change	-12.2%	-5.1%	-4.6%	-8.4%			
YTD 2010	127,039	29,911	112,011	268,961	47.2%	11.1%	41.6%
YTD 2011	118,915	28,955	106,631	254,501	46.7%	11.4%	41.9%
% Change	-6.4%	-3.2%	-4.8%	-5.4%			

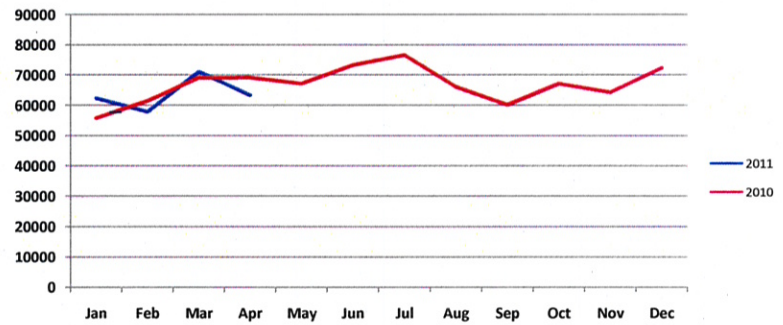
QUESTIONS OR COMMENTS? CALL:
T. MICHAEL BROWNING, A.A.E., DIRECTOR OF AVIATION
HARLINGEN'S VALLEY INTERNATIONAL AIRPORT
956/430-8605 www.flythevalley.com

Source: BRO, HRL and MFE Airport Management
Assembled and Distributed by HRL Management

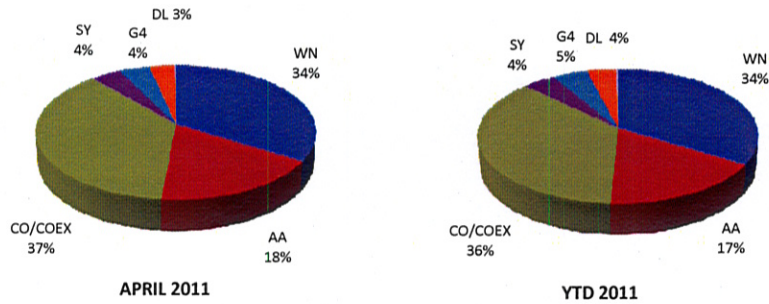
VIA Monthly 2011 vs. 2010



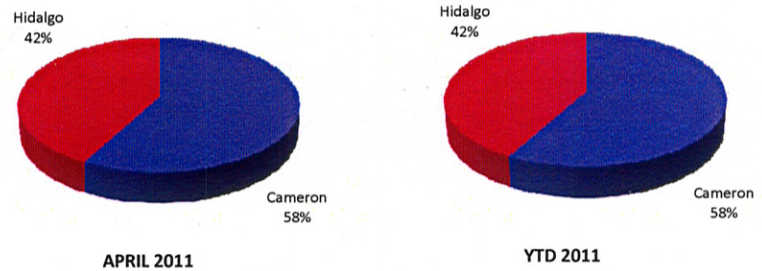
RGV Monthly 2011 vs. 2010



RGV Airline Market Share



Cameron County vs. Hidalgo County



QUESTIONS OR COMMENTS? CALL:
T. MICHAEL BROWNING, A.A.E., DIRECTOR OF AVIATION
HARLINGEN'S VALLEY INTERNATIONAL AIRPORT
956/430-8605 www.flythevalley.com

Source: BRO, HRL and MFE Airport Management
Assembled and Distributed by HRL Management