

ENPLANED/DEPLANED PASSENGERS  
MONTH OF APRIL 2010

**VALLEY INTERNATIONAL AIRPORT (HRL)**

**CALENDAR YEAR**

	APRIL 2010					INC/DEC %	2010 YEAR-TO-DATE					YEAR-TO-DATE ENPLANED - DEPLANED INC/DEC %
	ENPLANED	INC/DEC %	DEPLANED	INC/DEC %	TOTAL		ENPLANED	INC/DEC %	DEPLANED	INC/DEC %	TOTAL	
SOUTHWEST	24877	-4.73%	23694	-6.69%	48,571	-5.69%	92022	-7.59%	89925	-7.68%	181,947	-7.64%
CONTINENTAL	5812	7.81%	5233	3.64%	11,045	5.80%	23003	2.67%	21994	3.71%	44,997	3.18%
SUNCOUNTRY	2336	2.37%	1365	-11.48%	3,701	-3.22%	11071	-8.05%	10280	-9.81%	21,351	-8.90%
CHARTERS	371	n/a	346	n/a	717	n/a	943	-8.80%	918	5.40%	1,861	-2.31%
<b>TOTAL</b>	<b>33,396</b>	<b>-1.15%</b>	<b>30,638</b>	<b>-4.21%</b>	<b>64,034</b>	<b>-2.64%</b>	<b>127,039</b>	<b>-5.94%</b>	<b>123,117</b>	<b>-5.93%</b>	<b>250,156</b>	<b>-5.94%</b>

	APRIL 2009			2009 YEAR-TO-DATE		
	ENPLANED	DEPLANED	TOTAL	ENPLANED	DEPLANED	TOTAL
SOUTHWEST	26112	25392	51,504	99579	97408	196,987
CONTINENTAL	5391	5049	10,440	22405	21207	43,612
SUNCOUNTRY	2282	1542	3,824	12040	11398	23,438
CHARTERS	0	0	0	1034	871	1,905
<b>TOTAL</b>	<b>33,785</b>	<b>31,983</b>	<b>65,768</b>	<b>135,058</b>	<b>130,884</b>	<b>265,942</b>

**BROWNSVILLE/SOUTH PADRE ISLAND INTERNATIONAL AIRPORT (BRO)**

**CALENDAR YEAR**

	APRIL 2010					INC/DEC %	2010 YEAR-TO-DATE					YEAR-TO-DATE ENPLANED - DEPLANED INC/DEC %
	ENPLANED	INC/DEC %	DEPLANED	INC/DEC %	TOTAL		ENPLANED	INC/DEC %	DEPLANED	INC/DEC %	TOTAL	
CONTINENTAL	6,002	-4.01%	5,356	-9.63%	11,358	-6.75%	22,104	-11.41%	20,560	-12.39%	42,664	-11.88%
AMERICAN EAGLE	1,761	n/a	1,496	n/a	3,257	n/a	7,807	n/a	6,982	n/a	14,789	n/a
<b>TOTAL</b>	<b>7,763</b>	<b>24.15%</b>	<b>6,852</b>	<b>15.61%</b>	<b>14,615</b>	<b>19.99%</b>	<b>29,911</b>	<b>19.88%</b>	<b>27,542</b>	<b>17.36%</b>	<b>57,453</b>	<b>18.66%</b>

	APRIL 2009			2009 YEAR-TO-DATE		
	ENPLANED	DEPLANED	TOTAL	ENPLANED	DEPLANED	TOTAL
CONTINENTAL	6,253	5,927	12,180	24,950	23,468	48,418
<b>TOTAL</b>	<b>6,253</b>	<b>5,927</b>	<b>12,180</b>	<b>24,950</b>	<b>23,468</b>	<b>48,418</b>

ENPLANED/DEPLANED PASSENGERS  
MONTH OF APRIL 2010 -- CONTINUED

**MCALLEN INTERNATIONAL AIRPORT (MFE)**

**CALENDAR YEAR**

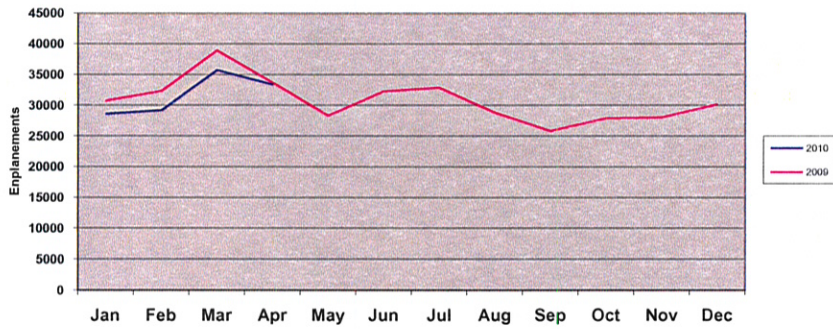
	APRIL 2010						2010 YEAR-TO-DATE					YEAR-TO-DATE ENPLANED - DEPLANED INC/DEC %
	ENPLANED	INC/DEC %	DEPLANED	INC/DEC %	TOTAL	INC/DEC %	ENPLANED	INC/DEC %	DEPLANED	INC/DEC %	TOTAL	
AMERICAN	10397	3.23%	9872	1.89%	20,269	2.57%	40655	13.83%	39587	12.66%	80,242	13.25%
CONTINENTAL	12495	-12.51%	11973	-12.71%	24,468	-12.60%	50916	-10.91%	48554	-12.95%	99,470	-11.92%
ALLEGiant	2975	-24.49%	2984	-20.70%	5,959	-22.64%	11828	-21.38%	11987	-19.27%	23,815	-20.33%
DELTA	2068	n/a	1985	n/a	4,053	n/a	8612	n/a	8666	n/a	17,278	n/a
CHARTERS	0	n/a	0	n/a	0	n/a	0	n/a	0	n/a	0	n/a
<b>TOTAL</b>	<b>27,935</b>	<b>-6.68%</b>	<b>26,814</b>	<b>-6.91%</b>	<b>54,749</b>	<b>-6.79%</b>	<b>112,011</b>	<b>1.09%</b>	<b>108,794</b>	<b>0.13%</b>	<b>220,805</b>	<b>0.61%</b>

	APRIL 2009			2009 YEAR-TO-DATE		
	ENPLANED	DEPLANED	TOTAL	ENPLANED	DEPLANED	TOTAL
AMERICAN	10072	9689	19,761	35715	35139	70,854
CONTINENTAL	14281	13716	27,997	57153	55775	112,928
ALLEGiant	3940	3763	7,703	15044	14848	29,892
DELTA	1643	1635	3,278	2893	2893	5,786
CHARTERS	0	0	0	0	0	0
<b>TOTAL</b>	<b>29,936</b>	<b>28,803</b>	<b>58,739</b>	<b>110,805</b>	<b>108,655</b>	<b>219,460</b>

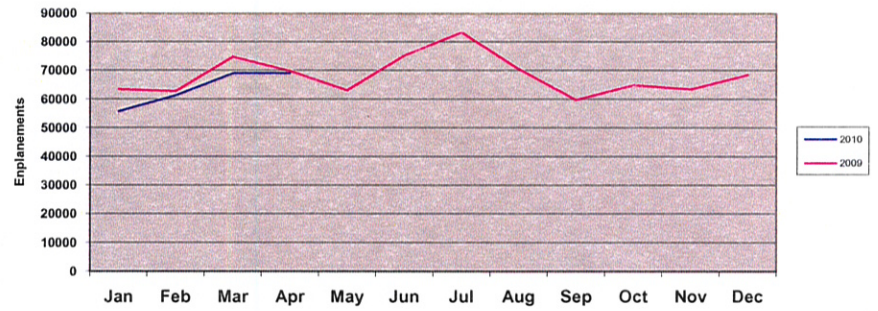
**RGV AIRPORT MARKET SHARE**

	HRL	BRO	MFE	TOTAL	% HRL	% BRO	% MFE
Apr 2009	33,785	6,253	29,936	69,974	48.3%	8.9%	42.8%
Apr 2010	33,396	7,763	27,935	69,094	48.4%	11.2%	40.4%
% Change	-1.2%	24.1%	-6.7%	-1.3%			
YTD 2009	135,058	24,950	110,805	270,813	49.9%	9.2%	40.9%
YTD 2010	127,039	29,911	112,011	268,961	47.3%	11.1%	41.6%
% Change	-5.9%	19.9%	1.1%	-0.7%			

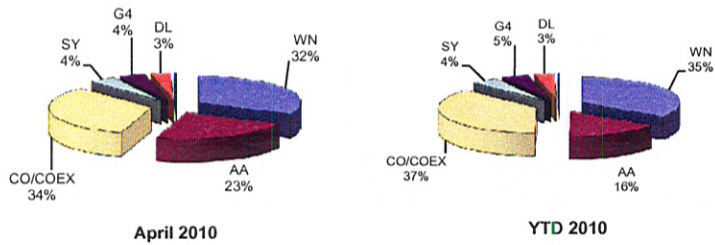
**VIA Monthly 2010 vs. 2009**



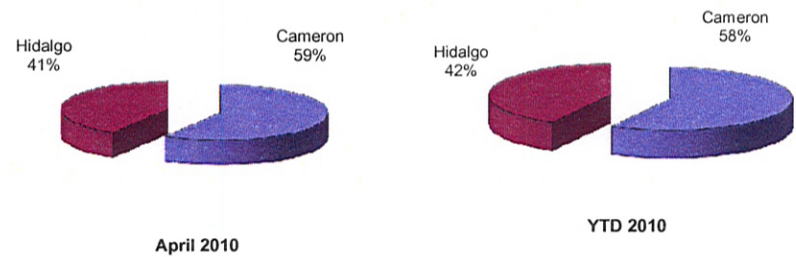
**RGV Monthly 2010 vs. 2009**



**RGV Airline Market Share**



**Cameron County vs. Hidalgo County**



QUESTIONS OR COMMENTS? CALL:  
T. MICHAEL BROWNING, A.A.E., DIRECTOR OF AVIATION  
HARLINGEN'S VALLEY INTERNATIONAL AIRPORT  
956/430-8605 www.flythevalley.com

Source: BRO, HRL and MFE Airport Management  
Assembled and Distributed by HRL Management