

ENPLANED/DEPLANED PASSENGERS
MONTH OF OCTOBER 2010

VALLEY INTERNATIONAL AIRPORT (HRL)

CALENDAR YEAR

	<u>OCTOBER 2010</u>					<u>INC/DEC %</u>	<u>2010 YEAR-TO-DATE</u>					<u>YEAR-TO-DATE ENPLANED - DEPLANED INC/DEC %</u>
	<u>ENPLANED</u>	<u>INC/DEC %</u>	<u>DEPLANED</u>	<u>INC/DEC %</u>	<u>TOTAL</u>		<u>ENPLANED</u>	<u>INC/DEC %</u>	<u>DEPLANED</u>	<u>INC/DEC %</u>	<u>TOTAL</u>	
SOUTHWEST	23,190	5.11%	22,867	5.60%	46,057	5.35%	239289	-0.71%	235922	-0.59%	475,211	-0.65%
CONTINENTAL	5,643	14.51%	5,319	12.22%	10,962	13.38%	57093	4.17%	53960	3.74%	111,053	3.96%
SUNCOUNTRY	583	13.20%	724	7.90%	1,307	10.20%	11654	-7.18%	11004	-8.82%	22,658	-7.98%
CHARTERS	229	-54.11%	236	58.39%	465	-28.24%	2517	-22.89%	2756	0.33%	5,273	-12.28%
TOTAL	29,645	5.86%	29,146	7.10%	58,791		310,553	-0.35%	303,642	-0.17%	614,195	-0.26%

	<u>OCTOBER 2009</u>			<u>2009 YEAR-TO-DATE</u>		
	<u>ENPLANED</u>	<u>DEPLANED</u>	<u>TOTAL</u>	<u>ENPLANED</u>	<u>DEPLANED</u>	<u>TOTAL</u>
SOUTHWEST	22,063	21,655	43,718	241,002	237,314	478,316
CONTINENTAL	4,928	4,740	9,668	54,809	52,015	106,824
SUNCOUNTRY	515	671	1,186	12,555	12,069	24,624
CHARTERS	499	149	648	3,264	2,747	6,011
TOTAL	28,005	27,215	55,220	311,630	304,145	615,775

BROWNSVILLE/SOUTH PADRE ISLAND INTERNATIONAL AIRPORT (BRO)

CALENDAR YEAR

	<u>OCTOBER 2010</u>					<u>INC/DEC %</u>	<u>2010 YEAR-TO-DATE</u>					<u>YEAR-TO-DATE ENPLANED - DEPLANED INC/DEC %</u>
	<u>ENPLANED</u>	<u>INC/DEC %</u>	<u>DEPLANED</u>	<u>INC/DEC %</u>	<u>TOTAL</u>		<u>ENPLANED</u>	<u>INC/DEC %</u>	<u>DEPLANED</u>	<u>INC/DEC %</u>	<u>TOTAL</u>	
CONTINENTAL	5,591	26.26%	5,353	23.83%	10,944	25.06%	55,571	-0.98%	52,158	-7.20%	107,729	-4.09%
AMERICAN AIRLINES	1,756	-34.99%	1,600	-36.15%	3,356	-35.55%	17,997	44.21%	16,503	n/a	34,500	59.82%
TOTAL	7,347	3.06%	6,953	1.82%	14,300		73,568	7.24%	68,661	5.13%	142,229	6.21%

	<u>OCTOBER 2009</u>			<u>2009 YEAR-TO-DATE</u>		
	<u>ENPLANED</u>	<u>DEPLANED</u>	<u>TOTAL</u>	<u>ENPLANED</u>	<u>DEPLANED</u>	<u>TOTAL</u>
CONTINENTAL	4,428	4,323	8,751	56,119	56,204	112,323
AMERICAN EAGLE	2,701	2,506	5,207	12,480	9,107	21,587
TOTAL	7,129	6,829	13,958	68,599	65,311	133,910

MCALLEN INTERNATIONAL AIRPORT (MFE)

CALENDAR YEAR

	<u>OCTOBER 2010</u>					<u>INC/DEC %</u>	<u>2010 YEAR-TO-DATE</u>					<u>YEAR-TO-DATE ENPLANED - DEPLANED INC/DEC %</u>
	<u>ENPLANED</u>	<u>INC/DEC %</u>	<u>DEPLANED</u>	<u>INC/DEC %</u>	<u>TOTAL</u>		<u>ENPLANED</u>	<u>INC/DEC %</u>	<u>DEPLANED</u>	<u>INC/DEC %</u>	<u>TOTAL</u>	
AMERICAN	8,666	-20.83%	8,406	-21.69%	17,072	-21.25%	96298	-3.08%	94303	-4.44%	190,601	-3.76%
CONTINENTAL	16,539	14.28%	16,446	17.61%	32,985	15.92%	134896	-11.28%	130430	-11.93%	265,326	-11.60%
ALLEGiant	2,485	0.12%	2,499	-0.68%	4,984	-0.28%	39154	-10.94%	38928	-10.58%	78,082	-10.76%
DELTA	2,514	27.23%	2,489	16.31%	5,003	21.55%	24468	63.81%	24591	58.46%	49,059	61.08%
CHARTERS	0	n/a	0	n/a	0	n/a	532	10.14%	532	20.91%	1,064	15.28%
TOTAL	30,204	0.75%	29,840	1.21%	60,044		295,348	-4.97%	288,784	-5.71%	584,132	-5.34%

	<u>OCTOBER 2009</u>			<u>2009 YEAR-TO-DATE</u>		
	<u>ENPLANED</u>	<u>DEPLANED</u>	<u>TOTAL</u>	<u>ENPLANED</u>	<u>DEPLANED</u>	<u>TOTAL</u>
AMERICAN	10,946	10,734	21,680	99,361	98,683	198,044
CONTINENTAL	14,472	13,984	28,456	152,043	148,098	300,141
CO INT'L	0	0	0	0	0	0
ALLEGiant	2,482	2,516	4,998	43,963	43,534	87,497
DELTA	1,976	2,140	4,116	14,937	15,519	30,456
CHARTERS	104	108	212	483	440	923
TOTAL	29,980	29,482	59,462	310,787	306,274	617,061

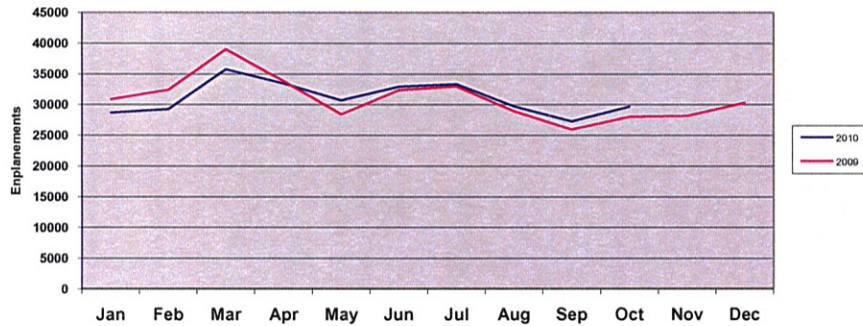
RGV AIRPORT MARKET SHARE

	<u>HRL</u>	<u>BRO</u>	<u>MFE</u>	<u>TOTAL</u>	<u>% HRL</u>	<u>% BRO</u>	<u>% MFE</u>
October 2009	28,005	7,129	29,980	65,114	43.1%	10.9%	46.0%
October 2010	29,645	7,347	30,204	67,196	44.2%	10.9%	44.9%
% Change	5.9%	3.1%	0.7%	3.2%			
YTD 2009	311,630	68,599	310,787	691,016	45.1%	9.9%	45.0%
YTD 2010	310,553	73,568	295,348	679,469	45.7%	10.8%	43.5%
% Change	-0.3%	7.2%	-5.0%	-1.7%			

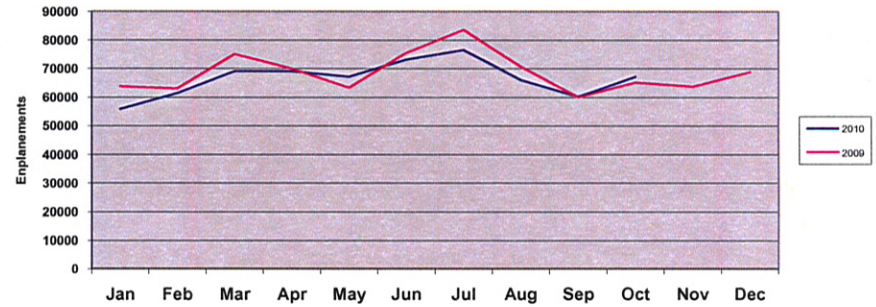
QUESTIONS OR COMMENTS? CALL:
T. MICHAEL BROWNING, A.A.E., DIRECTOR OF AVIATION
HARLINGEN'S VALLEY INTERNATIONAL AIRPORT
956/430-8605 www.flythevalley.com

Source: BRO, HRL and MFE Airport Management
Assembled and Distributed by HRL Management

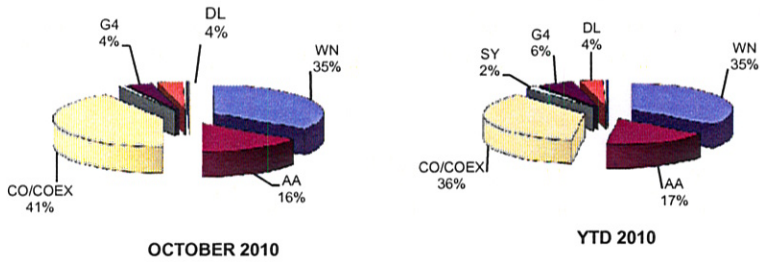
VIA Monthly 2010 vs. 2009



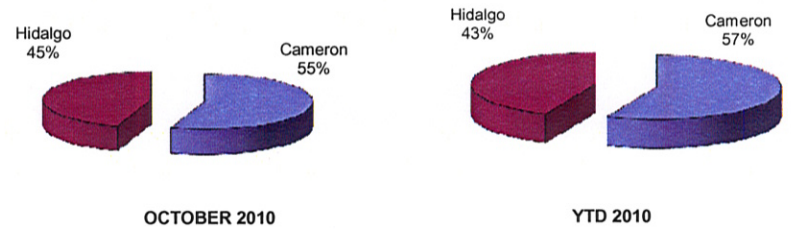
RGV Monthly 2010 vs. 2009



RGV Airline Market Share



Cameron County vs. Hidalgo County



* BRO AA started service in June 2009
**MFE DL started service on March 2, 2009

QUESTIONS OR COMMENTS? CALL:
T. MICHAEL BROWNING, A.A.E., DIRECTOR OF AVIATION
HARLINGEN'S VALLEY INTERNATIONAL AIRPORT
956/430-8605 www.flythevalley.com

Source: BRO, HRL and MFE Airport Management
Assembled and Distributed by HRL Management