

ENPLANED/DEPLANED PASSENGERS  
MONTH OF SEPTEMBER 2010

**VALLEY INTERNATIONAL AIRPORT (HRL)**

**CALENDAR YEAR**

	SEPTEMBER 2010					INC/DEC %	2010 YEAR-TO-DATE					YEAR-TO-DATE ENPLANED - DEPLANED INC/DEC %
	ENPLANED	INC/DEC %	DEPLANED	INC/DEC %	TOTAL		ENPLANED	INC/DEC %	DEPLANED	INC/DEC %	TOTAL	
SOUTHWEST	21,947	3.92%	21,939	3.93%	43,886	3.92%	216099	-1.30%	213055	-1.21%	429,154	-1.25%
CONTINENTAL	5,090	14.23%	4,786	11.41%	9,876	12.84%	51450	3.15%	48641	2.89%	100,091	3.02%
SUNCOUNTRY	0	n/a	0	n/a	0	n/a	11071	-8.05%	10280	-9.81%	21,351	-8.90%
CHARTERS	228	-34.48%	225	n/a	453	-34.91%	2288	-17.25%	2520	-3.00%	4,808	-10.35%
<b>TOTAL</b>	<b>27,265</b>	<b>5.17%</b>	<b>26,950</b>	<b>4.64%</b>	<b>54,215</b>		<b>280,908</b>	<b>-0.96%</b>	<b>274,496</b>	<b>-0.88%</b>	<b>555,404</b>	<b>-0.92%</b>

	SEPTEMBER 2009			2009 YEAR-TO-DATE		
	ENPLANED	DEPLANED	TOTAL	ENPLANED	DEPLANED	TOTAL
SOUTHWEST	21,120	21,110	42,230	218,939	215,659	434,598
CONTINENTAL	4,456	4,296	8,752	49,881	47,275	97,156
SUNCOUNTRY	0	0	0	12,040	11,398	23,438
CHARTERS	348	348	696	2,765	2,598	5,363
<b>TOTAL</b>	<b>25,924</b>	<b>25,754</b>	<b>51,678</b>	<b>283,625</b>	<b>276,930</b>	<b>560,555</b>

**BROWNSVILLE/SOUTH PADRE ISLAND INTERNATIONAL AIRPORT (BRO)**

**CALENDAR YEAR**

	SEPTEMBER 2010					INC/DEC %	2010 YEAR-TO-DATE					YEAR-TO-DATE ENPLANED - DEPLANED INC/DEC %
	ENPLANED	INC/DEC %	DEPLANED	INC/DEC %	TOTAL		ENPLANED	INC/DEC %	DEPLANED	INC/DEC %	TOTAL	
CONTINENTAL	5,071	21.34%	4,792	21.69%	9,863	21.51%	49,980	-3.31%	46,805	-4.57%	96,785	-3.92%
AMERICAN AIRLINES	1,456	-39.66%	1,392	-37.75%	2,848	-38.74%	16,241	66.08%	14,903	n/a	31,144	64.79%
<b>TOTAL</b>	<b>6,527</b>	<b>-0.99%</b>	<b>6,184</b>	<b>0.16%</b>	<b>12,711</b>		<b>66,221</b>	<b>7.73%</b>	<b>61,708</b>	<b>6.09%</b>	<b>127,929</b>	<b>6.93%</b>

	SEPTEMBER 2009			2009 YEAR-TO-DATE		
	ENPLANED	DEPLANED	TOTAL	ENPLANED	DEPLANED	TOTAL
CONTINENTAL	4,179	3,938	8,117	51,691	49,046	100,737
AMERICAN AIRLINES*	2,413	2,236	4,649	9,779	9,120	18,899
<b>TOTAL</b>	<b>6,592</b>	<b>6,174</b>	<b>12,766</b>	<b>61,470</b>	<b>58,166</b>	<b>119,636</b>

**MCALLEN INTERNATIONAL AIRPORT (MFE)**

**CALENDAR YEAR**

	<u>SEPTEMBER 2010</u>					<u>INC/DEC %</u>	<u>2010 YEAR-TO-DATE</u>					<u>YEAR-TO-DATE ENPLANED - DEPLANED INC/DEC %</u>
	<u>ENPLANED</u>	<u>INC/DEC %</u>	<u>DEPLANED</u>	<u>INC/DEC %</u>	<u>TOTAL</u>		<u>ENPLANED</u>	<u>INC/DEC %</u>	<u>DEPLANED</u>	<u>INC/DEC %</u>	<u>TOTAL</u>	
AMERICAN	7,796	-10.63%	7,385	-16.41%	15,181	-13.54%	87632	-0.89%	85897	-2.33%	173,529	-1.61%
CONTINENTAL	13,752	1.07%	13,166	-0.47%	26,918	0.31%	118357	-13.97%	113984	-15.01%	232,341	-14.48%
ALLEGiant	2,929	-15.95%	2,869	-16.23%	5,798	-16.09%	36669	-11.60%	36429	-11.19%	73,098	-11.40%
DELTA	1,959	16.96%	2,034	14.33%	3,993	15.61%	21954	69.39%	22102	65.20%	44,056	67.26%
CHARTERS	0	n/a	0	n/a	0	n/a	532	40.37%	532	60.24%	1,064	49.65%
<b>TOTAL</b>	<b>26,436</b>	<b>-3.83%</b>	<b>25,454</b>	<b>-6.65%</b>	<b>51,890</b>		<b>265,144</b>	<b>-5.58%</b>	<b>258,944</b>	<b>-6.45%</b>	<b>524,088</b>	<b>-6.01%</b>

	<u>SEPTEMBER 2009</u>			<u>2009 YEAR-TO-DATE</u>		
	<u>ENPLANED</u>	<u>DEPLANED</u>	<u>TOTAL</u>	<u>ENPLANED</u>	<u>DEPLANED</u>	<u>TOTAL</u>
AMERICAN	8,723	8,835	17,558	88,415	87,949	176,364
CONTINENTAL	13,607	13,228	26,835	137,571	134,114	271,685
CO INT'L	0	0	0	0	0	0
ALLEGiant	3,485	3,425	6,910	41,481	41,018	82,499
DELTA**	1,675	1,779	3,454	12,961	13,379	26,340
CHARTERS	0	0	0	379	332	711
<b>TOTAL</b>	<b>27,490</b>	<b>27,267</b>	<b>54,757</b>	<b>280,807</b>	<b>276,792</b>	<b>557,599</b>

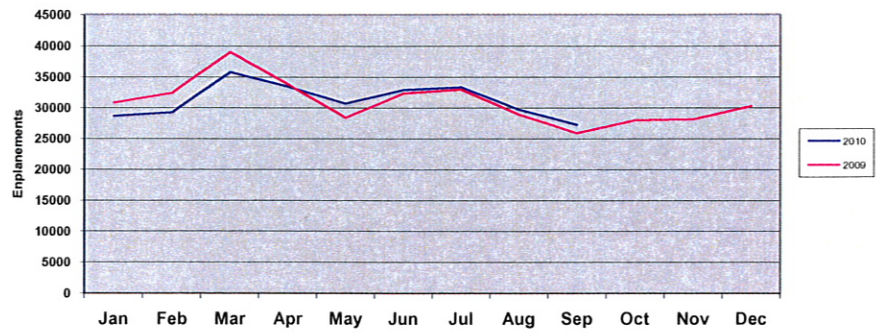
**RGV AIRPORT MARKET SHARE**

	<u>HRL</u>	<u>BRO</u>	<u>MFE</u>	<u>TOTAL</u>	<u>% HRL</u>	<u>% BRO</u>	<u>% MFE</u>
September 2009	25,924	6,592	27,490	60,006	43.2%	11.0%	45.8%
September 2010	27,265	6,527	26,436	60,228	45.3%	10.8%	43.9%
% Change	5.2%	-1.0%	-3.8%	0.4%			
YTD 2009	283,625	61,470	280,807	625,902	45.3%	9.8%	44.9%
YTD 2010	280,908	66,221	265,144	612,273	45.9%	10.8%	43.3%
% Change	-1.0%	7.7%	-5.6%	-2.2%			

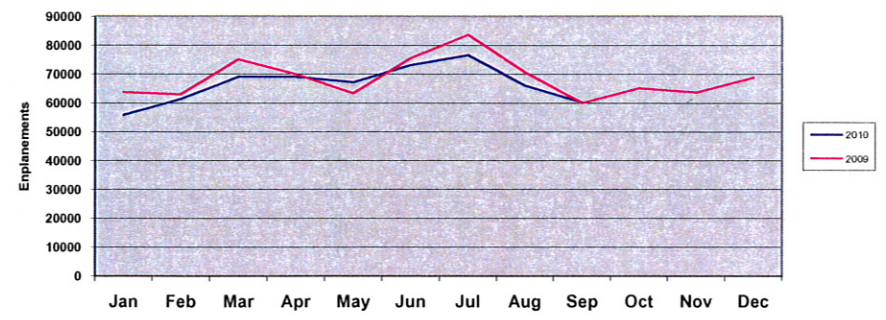
QUESTIONS OR COMMENTS? CALL:  
T. MICHAEL BROWNING, A.A.E., DIRECTOR OF AVIATION  
HARLINGEN'S VALLEY INTERNATIONAL AIRPORT  
956/430-8605 www.flythevalley.com

Source: BRO, HRL and MFE Airport Management  
Assembled and Distributed by HRL Management

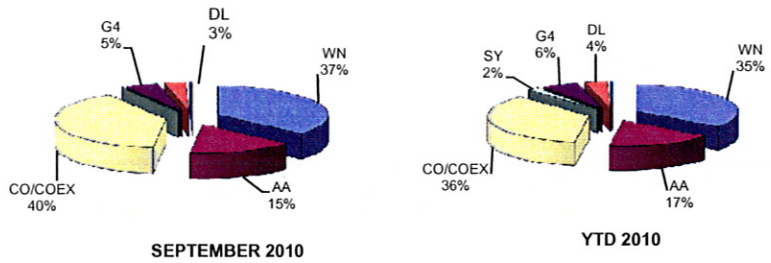
VIA Monthly 2010 vs. 2009



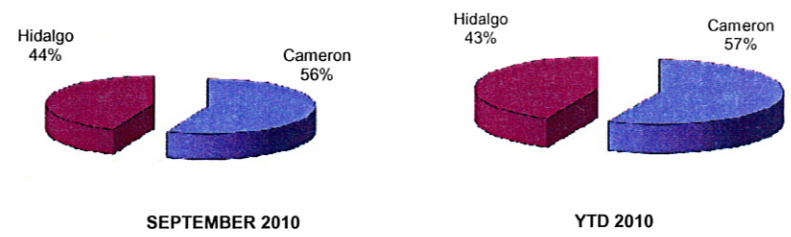
RGV Monthly 2010 vs. 2009



RGV Airline Market Share



Cameron County vs. Hidalgo County



\* BRO AA started service in June 2009  
\*\* MFE DL started service on March 2, 2009

QUESTIONS OR COMMENTS? CALL:  
T. MICHAEL BROWNING, A.A.E., DIRECTOR OF AVIATION  
HARLINGEN'S VALLEY INTERNATIONAL AIRPORT  
956/430-8605 www.flythevalley.com

Source: BRO, HRL and MFE Airport Management  
Assembled and Distributed by HRL Management