

ENPLANED/DEPLANED PASSENGERS  
MONTH OF JANUARY 2011

**VALLEY INTERNATIONAL AIRPORT (HRL)**

**CALENDAR YEAR**

	<u>JANUARY 2011</u>					<u>INC/DEC %</u>	<u>2011 YEAR-TO-DATE</u>					<u>YEAR-TO-DATE ENPLANED - DEPLANED INC/DEC %</u>
	<u>ENPLANED</u>	<u>INC/DEC %</u>	<u>DEPLANED</u>	<u>INC/DEC %</u>	<u>TOTAL</u>		<u>ENPLANED</u>	<u>INC/DEC %</u>	<u>DEPLANED</u>	<u>INC/DEC %</u>	<u>TOTAL</u>	
SOUTHWEST	20,962	0.88%	20,830	5.60%	41,792	3.18%	20,962	0.88%	20,830	5.60%	41,792	3.18%
CONTINENTAL	5,227	-2.81%	4,981	-1.60%	10,208	-2.22%	5,227	-2.81%	4,981	-1.60%	10,208	-2.22%
SUNCOUNTRY	2,232	-6.06%	2,668	-1.44%	4,900	-3.60%	2,232	-6.06%	2,668	-1.44%	4,900	-3.60%
CHARTERS	235	64.34%	240	67.83%	475	66.08%	235	64.34%	240	67.83%	475	66.08%
<b>TOTAL</b>	<b>28,656</b>	<b>-0.07%</b>	<b>28,719</b>	<b>3.92%</b>	<b>57,375</b>	<b>1.89%</b>	<b>28,656</b>	<b>-0.07%</b>	<b>28,719</b>	<b>3.92%</b>	<b>57,375</b>	<b>1.89%</b>

	<u>JANUARY 2010</u>			<u>2010 YEAR-TO-DATE</u>		
	<u>ENPLANED</u>	<u>DEPLANED</u>	<u>TOTAL</u>	<u>ENPLANED</u>	<u>DEPLANED</u>	<u>TOTAL</u>
SOUTHWEST	20,779	19,725	40,504	20,779	19,725	40,504
CONTINENTAL	5,378	5,062	10,440	5,378	5,062	10,440
SUNCOUNTRY	2,376	2,707	5,083	2,376	2,707	5,083
CHARTERS	143	143	286	143	143	286
<b>TOTAL</b>	<b>28,676</b>	<b>27,637</b>	<b>56,313</b>	<b>28,676</b>	<b>27,637</b>	<b>56,313</b>

**BROWNSVILLE/SOUTH PADRE ISLAND INTERNATIONAL AIRPORT (BRO)**

**CALENDAR YEAR**

	<u>JANUARY 2011</u>					<u>INC/DEC %</u>	<u>2010 YEAR-TO-DATE</u>					<u>YEAR-TO-DATE ENPLANED - DEPLANED INC/DEC %</u>
	<u>ENPLANED</u>	<u>INC/DEC %</u>	<u>DEPLANED</u>	<u>INC/DEC %</u>	<u>TOTAL</u>		<u>ENPLANED</u>	<u>INC/DEC %</u>	<u>DEPLANED</u>	<u>INC/DEC %</u>	<u>TOTAL</u>	
CONTINENTAL	5,146	7.70%	4,995	13.47%	10,141	10.47%	5,146	7.70%	4,995	13.47%	10,141	10.47%
AMERICAN EAGLE	1,730	-23.69%	1,343	-26.81%	3,073	-25.09%	1,730	-23.69%	1,343	-26.81%	3,073	-25.09%
<b>TOTAL</b>	<b>6,876</b>	<b>-2.40%</b>	<b>6,338</b>	<b>1.62%</b>	<b>13,214</b>	<b>-0.51%</b>	<b>6,876</b>	<b>-2.40%</b>	<b>6,338</b>	<b>1.62%</b>	<b>13,214</b>	<b>-0.51%</b>

	<u>JANUARY 2010</u>			<u>2010 YEAR-TO-DATE</u>		
	<u>ENPLANED</u>	<u>DEPLANED</u>	<u>TOTAL</u>	<u>ENPLANED</u>	<u>DEPLANED</u>	<u>TOTAL</u>
CONTINENTAL	4,778	4,402	9,180	4,778	4,402	9,180
AMERICAN EAGLE	2,267	1,835	4,102	2,267	1,835	4,102
<b>TOTAL</b>	<b>7,045</b>	<b>6,237</b>	<b>13,282</b>	<b>7,045</b>	<b>6,237</b>	<b>13,282</b>

**MCALLEN INTERNATIONAL AIRPORT (MFE)**

**CALENDAR YEAR**

	<u>JANUARY 2011</u>					<u>INC/DEC</u> <u>%</u>	<u>2010 YEAR-TO-DATE</u>					<u>YEAR-TO-DATE</u> <u>ENPLANED - DEPLANED</u> <u>INC/DEC %</u>
	<u>ENPLANED</u>	<u>INC/DEC</u> <u>%</u>	<u>DEPLANED</u>	<u>INC/DEC</u> <u>%</u>	<u>TOTAL</u>		<u>ENPLANED</u>	<u>INC/DEC</u> <u>%</u>	<u>DEPLANED</u>	<u>INC/DEC</u> <u>%</u>	<u>TOTAL</u>	
AMERICAN	8,763	-6.11%	8,989	1.01%	17,752	-2.63%	8,763	-6.11%	8,989	1.01%	17,752	-2.63%
CONTINENTAL	12,172	-7.98%	12,353	1.61%	24,525	-3.39%	12,172	-7.98%	12,353	1.61%	24,525	-3.39%
ALLEGiant	3,494	24.30%	3,716	24.87%	7,210	24.59%	3,494	24.30%	3,716	24.87%	7,210	24.59%
DELTA	2,335	26.35%	2,513	23.19%	4,848	24.69%	2,335	26.35%	2,513	23.19%	4,848	24.69%
CHARTERS	0	n/a	0	n/a	0	n/a	0	n/a	0	n/a	0	n/a
<b>TOTAL</b>	<b>26,764</b>	<b>-1.68%</b>	<b>27,571</b>	<b>5.75%</b>	<b>54,335</b>		<b>26,764</b>		<b>27,571</b>		<b>54,335</b>	<b>1.96%</b>

	<u>JANUARY 2010</u>			<u>2010 YEAR-TO-DATE</u>		
	<u>ENPLANED</u>	<u>DEPLANED</u>	<u>TOTAL</u>	<u>ENPLANED</u>	<u>DEPLANED</u>	<u>TOTAL</u>
AMERICAN	9,333	8,899	18,232	9,333	8,899	18,232
CONTINENTAL	13,228	12,157	25,385	13,228	12,157	25,385
ALLEGiant	2,811	2,976	5,787	2,811	2,976	5,787
DELTA	1,848	2,040	3,888	1,848	2,040	3,888
CHARTERS	0	0	0	0	0	0
<b>TOTAL</b>	<b>27,220</b>	<b>26,072</b>	<b>53,292</b>	<b>27,220</b>	<b>26,072</b>	<b>53,292</b>

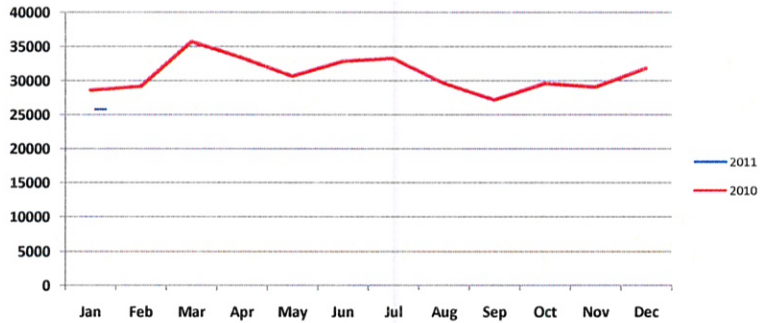
**RGV AIRPORT MARKET SHARE**

	<u>HRL</u>	<u>BRO</u>	<u>MFE</u>	<u>TOTAL</u>	<u>% HRL</u>	<u>% BRO</u>	<u>% MFE</u>
January 2010	28,676	7,045	27,220	62,941	45.6%	11.2%	43.2%
January 2011	28,656	6,876	26,764	62,296	46.0%	11.0%	43.0%
% Change	-0.1%	-2.4%	-1.7%	-1.0%			
YTD 2010	28,676	7,045	27,220	62,941	45.6%	11.2%	43.2%
YTD 2011	28,656	6,876	26,764	62,296	46.0%	11.0%	43.0%
% Change	-0.1%	-2.4%	-1.7%	-1.0%			

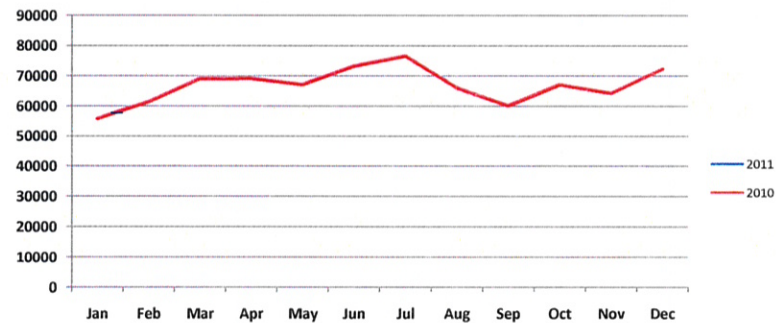
QUESTIONS OR COMMENTS? CALL:  
T. MICHAEL BROWNING, A.A.E., DIRECTOR OF AVIATION  
HARLINGEN'S VALLEY INTERNATIONAL AIRPORT  
956/430-8605 www.flythevalley.com

Source: BRO, HRL and MFE Airport Management  
Assembled and Distributed by HRL Management

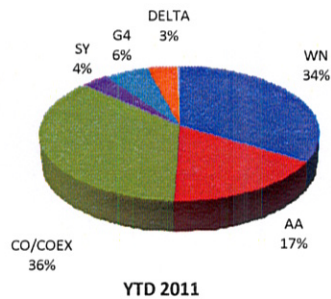
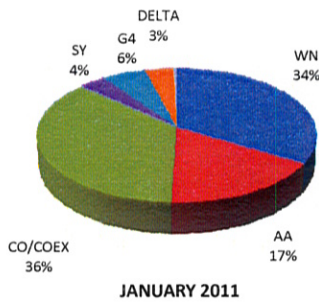
VIA Monthly 2011 vs. 2010



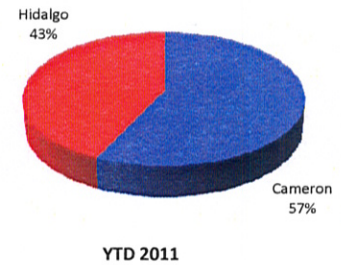
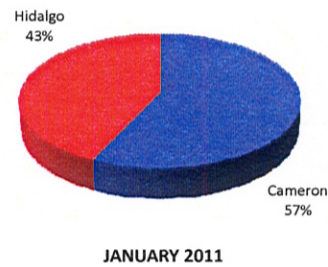
RGV Monthly 2011 vs. 2010



RGV Airline Market Share



Cameron County vs. Hidalgo County



QUESTIONS OR COMMENTS? CALL:  
T. MICHAEL BROWNING, A.A.E., DIRECTOR OF AVIATION  
HARLINGEN'S VALLEY INTERNATIONAL AIRPORT  
956/430-8605 www.flythevalley.com

Source: BRO, HRL and MFE Airport Management  
Assembled and Distributed by HRL Management